

PLUMAS RURAL SERVICES

SEPTEMBER 2024

WWW.PLUMASRURALSERVICES.ORG

INSIDE THIS ISSUE:

PRS SERVICES - 1

STAFF HIGHLIGHT - 2

PROGRAM HIGHLIGHT - 2

JOB OPENINGS - 3

DISASTER SERVICES UPDATES - 3

CALENDAR - 4

NATIONAL 988 DAY - 4

PRS SERVICES

Plumas Rural Services (PRS) provides community and social services throughout Modoc (M), Lassen (L), Plumas (P) and Sierra (S) counties, as well as remote/online services (Remote). What do we offer near you?

[A.L.I.V.E.](#) (P)

[Anger Management / Batterer's Intervention](#) (P)

[Child Care Payment Program](#) (P)

[Child Care Resource & Referral](#) (P)

[Community Training & Development](#) (M, L, P, S, Remote)

[Disaster Case Management Program](#) (P-Dixie Fire)

[Domestic Violence Services & Shelter](#) (P, S)

[Early Start Family Resource Center](#) (P)

[Family Empowerment Center](#) (M, L, P, S)

[Grief Recovery](#) (M, L, P, S, Remote)

[In-Home Respite Care](#) (P)

[Mindful Living / Parenting Classes / Co-Parenting Classes](#) (P, Remote)

[Nature Made Youth Program](#) (P)

[Plumas STARS](#) (P)

[Plumas Transit Systems](#) (P)

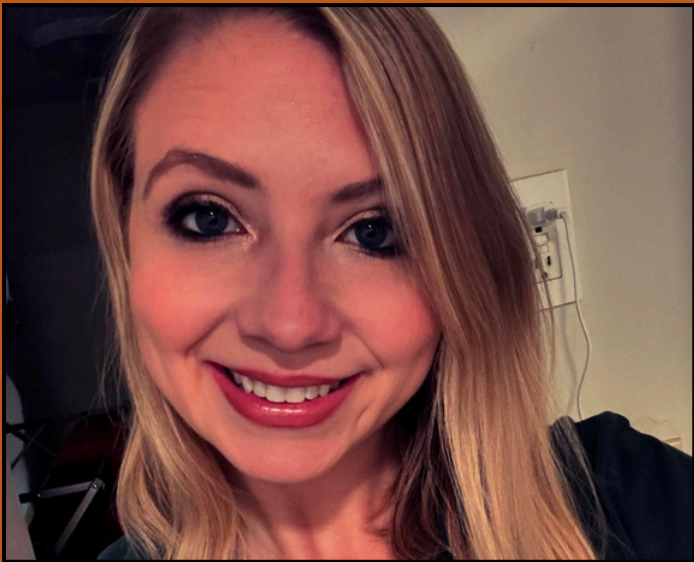
[Resource & Call Program](#) (P)

[Trauma Recovery & Education](#) (P, Remote)

[Visions Youth Program](#) (P)

[Women, Infants & Children \(WIC\)](#) (P)

These services support individuals, families and communities with a wide array of needs. We support individuals with disabilities from birth through end of life, as well as their families and caregivers. We aid families of young children needing nutrition support or help accessing child care, as well as those providing child care. We support individuals aiming to live free of violence in their home and those seeking to break the cycle. We provide resource information, training, education, advocacy, and more. Click on one of the programs above to learn more.



ASHLEE JOHNSTON

HR/MARKETING COORDINATOR

PRS HR/Marketing Coordinator Ashlee Johnston grew up in PRS, spending time afterschool in the offices where her mother worked. This drew her to wanting to work at the agency when she was older. Ashlee came to PRS after graduating college, first working in ALIVE with the goal of helping individuals with intellectual and developmental disabilities.

Ashlee moved to Human Resources in August 2020, which was something that felt familiar as she was following in her mother's footsteps. "I knew how much growth I could gain as an individual learning the ins and out of HR," Ashlee says of the field. "I really love the *human* element to it. I know every person at the agency and something about them. That's one of my favorite parts of working in HR."

Ashlee's position shifted this summer to include Marketing for PRS. When the opportunity came up to move in that direction, she knew she had a skill set to benefit the agency she grew up loving. Within her new role in Marketing, Ashlee is excited about being able to attend more outreach events to increase awareness of the agency and the many resources and services it offers, while also supporting individual staff and programs. She's also looking forward to creating an agency-wide marketing plan with consistent outreach and awareness efforts throughout the year.

Continued...

When she's not working at PRS, Ashlee enjoys fishing and riding quads with her father. She spends a lot of time with her family, which is very important to her. She can also be found line dancing and swing dancing when the opportunity presents itself.

COMMUNITY TRAINING

Launched in 2015, PRS's Community Training program offers regular training programs related to leadership and supervisory skills, customer service, team building, mental health and wellness, grief recovery, personal professional development and more.

The program delivers certification courses and designs training solutions according to clients' specific needs. Community Training Manager Dana Nowling offers business consultancy and online workshops related to workforce development and mental health and wellness.

SEPTEMBER IS NATIONAL SUICIDE PREVENTION MONTH

Dana will be hosting two free safeTALK suicide alertness workshops on Wednesday, September 11th, at the Christian Life Fellowship Church in Quincy (more information and registration can be found here: [8:30-12 AM](#) or [1-4:30 PM](#)).

Dana and her team offer Mental Health First Aid, ASIST (Applied Suicide Intervention Skills Training), and safeTALK trainings free through Modoc, Lassen, Plumas and Sierra counties.

The Community Training & Development program also hosts a collection of free training resources, including the Connect the Dots series of free training webinars taught by certified Mental Health First Aid and ASIST instructors and local experts.

More information about the Community Training & Development program, including the Connect the Dots video library, can be [found here](#).

JOB OPENINGS

PRS is hiring! The following information includes a snapshot of available positions at the time of this newsletter's publication. Click on job titles for more information, including job descriptions, hours and requirements.

TECHNOLOGY INTERN \$18.53-\$24.83/hr

Assists with the maintenance of agency computers and network systems, phones, and other office equipment. Applicants with higher qualifications may be considered for a Technology Specialist position (\$19.46-\$26.08/hr).

FEC FAMILY SPECIALIST \$19.32-\$25.89/hr

Family Empowerment Center (FEC) direct service position providing free information on community resources for parents and caregivers of children and young adults with disabilities in Modoc, Lassen, Plumas and Sierra counties. (Bilingual \$21.25-28.48/hr)

WIC PROGRAM ASSISTANT IV/WNA \$19.99-\$26.61/hr

This position manages the WIC office in Quincy as well as direct client services to WIC recipients and limited nutrition and breastfeeding education and counseling.

RESPIRE CARE PROVIDER \$17.49-\$23.26/hr

RESPIRE PROVIDER II \$20.53-\$25.53/hr

The Respite program provides respite care for caregivers of the elderly and people with physical and/or developmental disabilities. These positions provide in-home care and developmentally and age-appropriate activities for clients. May also provide transportation.

TRANSIT DRIVER \$16.43-\$21.84/hr

(\$18.55-\$24.68/hr with Class B License) On-call hours. Provides safe, reliable and courteous service to the general public while operating any Plumas County Transit vehicle. Applications must include a DMV driving record. This position includes a \$500 hiring bonus, another \$500 after obtaining the appropriate license, and another \$1,000 after 1 year of employment.

WE ARE HIRING

Continued...

ALIVE SUPPORT SPECIALIST I \$19.32-\$25.71/hr

The ALIVE program provides day services, independent living, job development and job coaching services to individuals with development, intellectual and physical disabilities.

Up-to-date information on employment opportunities may be found on [PRS's website here](#). Each applicant must submit an application, cover letter and resume. Applications and instructions for submitting can be found at the link above.

DISASTER SERVICES

August saw the end of FEMA funding for Dixie Fire disaster case management services. With the support of the North Valley Community Foundation and the Dixie Fire Collaborative, PRS is able to maintain a smaller disaster recovery program for the next six months to help Dixie survivors in their recovery plans.

PRS will also support efforts across Plumas County to help residents be aware wildfire risk and preparedness measures they can take through a special grant from the California Fire Foundation for preventing, preparing and/or responding to major events, including wildfires and other disasters. The Foundation has teamed up with funding partners across the state to aid grantees in helping their communities address issues that threaten millions of Californians each year. More information is available at cafirefoundation.org.

Also in August, PRS received an award from The Almanor Foundation to distribute \$50 gift cards to those displaced by the Gold Complex fires in July.





NATIONAL 988 DAY

This year marks the kickoff of a new, annual tradition that raises awareness of the 988 Suicide & Crisis Lifeline and mental health support, the first annual 988 Day (Sunday, September 8th)! The theme for this inaugural year is **"No Judgment, Just Help."**

SEPTEMBER EVENTS

Thursday, September 5, 10:00 AM - 2:00 PM

WIC Clinic in Greenville, Indian Valley Medical Clinic
176 Hot Springs Road, Greenville
11:00 AM - 1:00 PM Car Seat Clinic on site

**Wednesday, September 11, 8:30 AM - 12:00 PM or
Wednesday, September 11, 1:00 - 4:30 PM**

safeTALK Suicide Alertness Workshop
Christian Life Fellowship Church
317 1st Street, Quincy
Register [here for AM session](#) or [here for PM session](#)

Wednesday, September 11, 6:00 - 7:30 PM

Community Care Licensing Q&A at PRS
Child care licensing updates, counts as 1.5 hours of
CCIP training for providers; dinner provided.
711 E. Main Street, Quincy
Pre-registration is required, call 530-283-4453 x 824

Thursdays, September 12 & 26, 10:00 AM - 2:00 PM

WIC Clinic in Portola
171 Nevada Street, Portola

Thursday, September 19, 10:00 AM - 2:00 PM

WIC Clinic in Chester, Almanor Rec. & Parks Building
101 Meadowbrook Loop, Chester

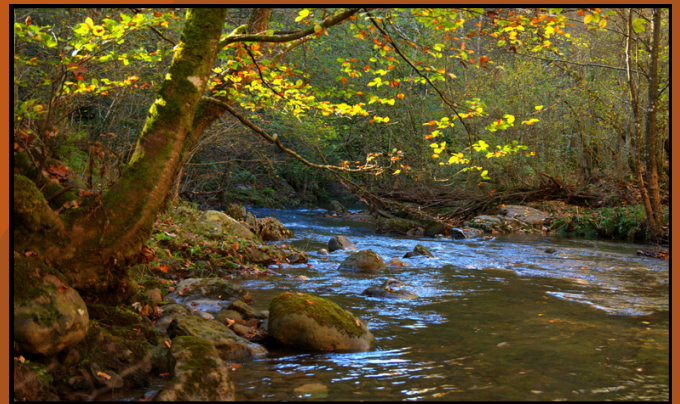
Friday, September 20, 11:00 AM - 1:00 PM

Car Seat Clinic, WIC Office
711 E. Main Street, Quincy

The 988 Suicide and Crisis Lifeline offers 24/7 access to trained crisis counselors who can help people experiencing mental health-related distress. Visit the [988 website](#) for more information about how 988 provides judgment-free support for mental health, substance use, and more.



**NO JUDGMENT.
JUST HELP.**



There is a time in late September when the leaves are still green, and the days are still warm, but somehow you know that it is all about to end, as if summer was holding its breath, and when it let it out again, it would be autumn.

- Sharyn McCrumb

CONNECT WITH US:

530-283-2735

www.PlumasRuralServices.org

Facebook: [@prs.social](#)

Instagram: [@plumasruralservices_inc](#)

X (formerly Twitter): [@PRS_Inc](#)

