

PLUMAS RURAL SERVICES

AUGUST 2025

WWW.PLUMASRURALSERVICES.ORG

INSIDE THIS ISSUE:

CHILD CARE PAYMENT PROGRAM - 1

STAFF HIGHLIGHT - 2

PARENT PROJECT - 3

ESFRC SUMMER FUN - 3

CALENDAR - 4

JOB OPENINGS - 4

CHILD CARE PAYMENT PROGRAM

The Child Care Payment Program (CCPP) is one of PRS's three programs supporting families needing child care and child care providers in Plumas County. The CCPP can pay child care costs for parents or guardians who are:

- Working
- Seeking work
- Homeless
- Referred by the County Department of Social Services
- Incapacitated
- In an approved school or training program
- Referred by CPS

Eligibility for this program is based on household income. Income eligibility has been updated as of July 1st this year. The maximum income a household may have to qualify for CCPP services at the time of publishing is as shown below.

The CCPP can support child care costs for families that meet both income eligibility and at least one of the needs listed above. Child care costs can be paid for children from birth through age 12. Children with a severe disability can receive child care up to the age of 21 with required documentation.

Family Size	Monthly Gross Income
1 or 2	\$6,860
3	\$7,785
4	\$9,020
5	\$10,463
6	\$11,906
7+	Please Call

Continued page 2...





FABIOLA GABRIEL-CANO

CCPP PROGRAM ASSISTANT

Fabiola Gabriel-Cano was born in Guatemala and came to the US at a young age. She lived in Los Angeles for a few years before she and her family moved to Plumas County when she was 13. She has been in Plumas County since that time, as her parents realized it was a safer environment to raise her and her siblings. She has enjoyed watching them grow up here, because there is time and space to be outdoors in the mountains and explore the county. She loves living here!

She went to school at Feather River College with the aim of becoming a bilingual specialist, and based on the FRC course offerings she focused her studies on child development. Her counselor at FRC encouraged Fabiola to apply for an open position at PRS with the Family Empowerment Center. She was hired and has been with PRS for about 2.5 years now. Soon after her hire, she took on part-time work with PRS's Child Care Payment Program, and then transitioned fully to CCPP in May 2025. She likes helping parents and breaking the language barrier to access for Spanish speakers in the county.

"What feels really rewarding working here is when parents are getting enrolled, they're always very thankful to have someone who understands their situation," Fabiola says. "Being able to help them, even in a little way, feels fulfilling because even

Continued...

when I can't fully understand what a parent is going through, taking something off their plate makes me feel good and that my work is valuable." In particular when working with Spanish-speaking parents, she often hears that this is the first time they are encountering services in Plumas County that are offered in their native language, and it really makes a difference in accessibility and the sense of inclusion.

When she's not working, Fabiola likes taking pictures of landscapes as well as drawing - sometimes landscapes also or combining her roots to Plumas County in abstract compositions.

CCPP, CONTINUED

Continued from page 1...

The CCPP can pay your child care provider up to a certain amount for either full-time or part-time care, and up to a number of hours based on need. Families desiring child care beyond their determined level of need or above the reimbursement rate set by the state may be responsible for the difference. Families making more than 75% of the state median household income may also be responsible for Family Fees, ranging from \$34.30-\$68.60 per month (assessed per family, not per child).

Staff at the CCPP can help a family determine their eligibility for support, understand the benefits they may receive, enroll for services and more. You may reach the program by calling 530-283-4453.

Services can be provided in English or Spanish, or other languages via translation.

More information can be found on the [CCPP webpage](#).



PARENT PROJECT®

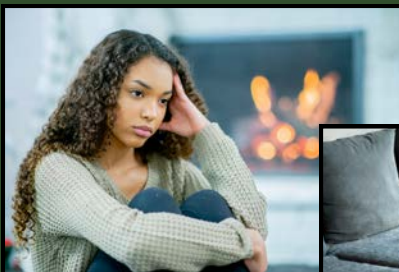
The Plumas County Probation Department is providing the Parent Project® to serve families of teens with the Changing Destructive Adolescent Behavior multi-week program. PRS is contracted to deliver this program in Plumas County, and will start the next session on Tuesday, September 2nd. This program is free for parents, but registration is required.

In this program, parents meet weekly for 2 hours with the program facilitator via Zoom. The Parent Project® has activity-based curriculum that allows parents to learn and practice behavior management techniques at home. Critical issues that may be addressed include:

- Arguing and Family Conflict
- Childhood Trauma
- Poor School Performance
- Truancy and Dropouts
- Media Influence
- Early Teen Sexuality
- Teen Drug Use
- Teen Violence and Bullying
- Youth Gangs
- Runaways



For more information or for registration details, contact Nick Shirk at 530-283-2735, ext. 897.



ESFRC SUMMER FUN

With funding from Plumas STARS and support from the City of Portola, PRS's Early Start Family Resource Center (ESFRC) was able to purchase four family pool passes to give away to local families in Portola. The program also purchased pool passes from the Central Plumas Recreation & Park District. ESFRC combined the pool passes with summer safety pool bags to distribute to 20 Plumas County families who participate in the program. The bags included items such as towels, swim goggles, sunscreen, water toys, and more, as well as a flyer on water safety.



ESFRC supports families with young children from birth to 3 years of age who have or may be at risk of having disabilities and/or developmental delays. These summer safety give-aways are one fun way the program encourages participating families to engage in their community with their children, promoting fully inclusive activities and environments that support all Plumas County children. To learn more about this program, visit the [ESFRC webpage](#) or call 530-283-2735, ext. 880.



Wednesday, August 7, 9:00 AM - 5:00 PM

Mental Health First Aid Training

CLF Church

317 First Street, Quincy

Registration Required, free to residents of Plumas, Lassen, Modoc & Sierra Counties

Saturday, August 9, 9:00 AM - 2:00 PM

Nature Made Kids Camp at Wild Plumas

1323 Greenville Wolf Creek Road, Greenville

Pre-registration required by August 1st

More Info and Registration Link



August is the month of the high-sailing hawks.
- John Burroughs

JOB OPENINGS

The following information includes a snapshot of available positions at the time of this newsletter's publication. Click on job titles for more information.

TRANSIT DRIVER (On-call)

Provides safe, reliable and courteous service to the general public while operating any Plumas County Transit vehicle. Applications must include a DMV driving record. This position includes various bonuses.

ALIVE GENERAL AIDE (On-call)

ALIVE SUPPORT SPECIALIST (Full-time & part-time)

The ALIVE program provides day services, independent living, job development and job coaching services to individuals with developmental, intellectual and physical disabilities.

DOMESTIC VIOLENCE ADVOCATE (Part-time)

The DVS program provides counseling, legal assistance, emergency shelter, housing and job search assistance, food, clothing and transportation for survivors of domestic abuse and their children. Position works directly with clients and their children at the emergency shelter.

CHILD CARE PAYMENT PROG ASST IV (Full-time)

The Child Care Payment Program helps to reimburse for child care for eligible families with a child care provider of the parent's choice. The position supports the Child Care Payment Program with a variety of clerical supports and may provide outreach and support for Hispanic providers.

Up-to-date information on employment opportunities may be found on PRS's website here.

DONATE TODAY:



530-283-2735

www.PlumasRuralServices.org

Facebook: @prs.social

X (formerly Twitter): @PRS_Inc

Instagram: @plumasruralservices_inc

